

Get the most out of your MD-Series

This guide describes briefly how to start using your MD-Series.

For information about file compatibility please refer to appendix.

For more information on how to use the MD-Series we refer to the user manual



1. Create your content

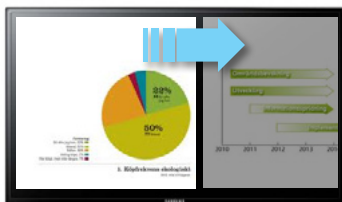
Content is easily created in different ways

- One way is to use a Microsoft PowerPoint presentation and save each slide as a JPG-file
- Maybe you already have your campaign or menu board in digital form?
- Then you are ready to go!



2. Prepare and connect your USB-stick

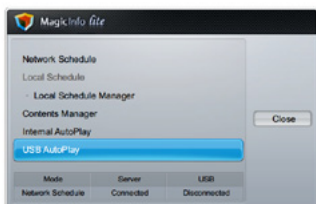
- Create a folder called "MagicInfoSlide" on your USB-stick
- Save your images, videos or flash files in the "MagicInfoSlide" folder
- Insert the USB-stick in your Samsung MD-Series monitor



3. Set slide transition

- Press "Menu" on remote control
- Select "Network" menu and then "MagicInfo Lite Settings"
- In the "Slideshow" menu you can set image transition time and image effect

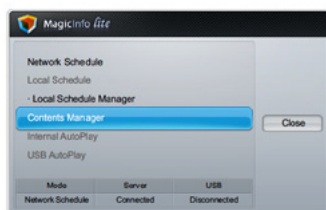
For more info – 7.3 (User Manual)



4. Play your content

- Use the remote control and press the "Magic Info Lite!" button
- Select "USB AutoPlay" and your files will start to play in alphabetical order until screen is turned off

For more info - 10.7 (User Manual)



5. Copy and Play you content using built-in memory

- If you don't want to play content from the USB-stick you can easily copy the content to the built in memory (800MB)
- Select "Internal AutoPlay" and your files will start to play in alphabetical order until screen is turned off

For more info - 10.5, 10.6 (User Manual)



6. On/off – set a schedule for the screen

- Press "Menu" button on the remote
- Go to "System" and then "Time"
- Set time and date
- Set on time, days and source (Magic Info Lite)
- Set off time and days

Appendix

File Formats Compatible with MagicInfo Lite Player

[Read before using **MagicInfo Lite Player**]

- Supported USB-device file systems include FAT16 and FAT32. (NTFS is not supported.)
- A file with a vertical and horizontal resolution larger than the maximum resolution cannot be played.
Check the vertical and horizontal resolution of the file.
- Video that does not contain audio data is not supported. Check that the video file contains audio data.
- Check the supported video and audio Codec types and Versions.
- Check the supported file versions.
 - Flash version up to 10.1 is supported
 - PowerPoint version up to 97 – 2007 is supported
- Content with a size of 2GB or larger cannot be assigned to **Network Schedule**.

Video / Audio

File Extension	Container	Video Codec	Resolution	Frame rate(fps)	Bit rate (Mbps)	Audio Codec
*.avi *.mkv	AVI MKV	DivX 3.11 / 4.x / 5.1 / 6.0	1920x1080	6 ~ 30	8	MP3 / AC3 / LPCM / ADPCM / DTS Core
		Motion JPEG	1920x1080	6 ~ 30	8	
*.asf	ASF	DivX 3.11 / 4.x / 5.1 / 6.0	1920x1080	6 ~ 30	8	MP3 / AC3 / LPCM / ADPCM / WMA
		H.264 BP / MP / HP	1920x1080	6 ~ 30	25	
		MPEG4 SP / ASP	1920x1080	6 ~ 30	8	
		Motion JPEG	1920x1080	6 ~ 30	8	
*.wmv	ASF	Window Media Video v9	1920x1080	6 ~ 30	25	WMA
*.mp4	MP4	H.264 BP / MP / HP	1920x1080	6 ~ 30	25	MP3 / ADPCM / AAC
		MPEG4 SP / ASP	1920x1080	6 ~ 30	8	
*.3gp	3GPP	H.264 BP / MP / HP	1920x1080	6 ~ 30	25	ADPCM / AAC / HE-AAC
		MPEG4 SP / ASP	1920x1080	6 ~ 30	8	

File Extension	Container	Video Codec	Resolution	Frame rate(fps)	Bit rate (Mbps)	Audio Codec
*.vro	VRO VOB	MPEG1	352x288	24 / 25 / 30	30	AC3 / MPEG / LPCM
		MPEG2	1920x1080	24 / 25 / 30	30	
*.mpg *.mpeg	PS	MPEG1	352x288	24 / 25 / 30	30	AC3 / MPEG / LPCM / AAC
		MPEG2	1920x1080	24 / 25 / 30	30	
		H.264	1920x1080	6 ~ 30	25	
*.ts *.tp *.trp	TS	MPEG2	1920x1080	24 / 25 / 30	30	AC3 / AAC / MP3 / DD+ / HE-AAC
		H.264	1920x1080	6 ~ 30	25	
		VC1	1920x1080	6 ~ 30	25	

Video

- Video content without audio is not supported.
- 3D video is not supported.
- Content with a resolution larger than the resolution specified in the table above is not supported.
- Video content with a Bit rate or Frame rate larger than the rate specified in the table above can cause choppy video during playback.
- H.264 Level 4.1 or lower is supported.
- H.264 FMO/ASO/RS, VC1 SP/MP/AP L4, AVCHD are not supported.
- MPEG4 SP/ASP
 - 1280 x 720 or smaller : Max. 60 frames / Larger than 1280 x 720 : Max. 30 frames
- GMC 2 or higher is not supported.

Audio

- Audio content without video is not supported.
(Only mp3 files are supported as background music for image/PPT slideshows. This feature is available only when using the network schedule menu.)
- Audio content with a Bit rate or Frame rate larger than the rate specified in the table above can cause choppy audio during playback.
- WMA 7, 8, 9 STD or lower is supported.
- WMA 9 PRO does not support lossless audio and multi-channel audio higher than 2 channels.
- WMA sampling rate 22050Hz mono is not supported.

Image

- Compatible image file format : Jpeg
- Supported maximum resolution : 15,360 x 8640
- Supported image effects : 8 effects (Fade1, Fade2, Blind, Spiral, Checker, Linear, Stairs, Wipe)

Flash

- Compatible with Flash 10.1
- Flash Animation
 - Compatible file format : SWF
- Resolution : 1280 x 720
 - Caution
 - Performance comparable to Flash Player on a Windows operating system cannot be guaranteed
 - Optimization is needed during content creation
- Flash Video
 - Compatible file format : FLV
 - Video
 - Codec : H.264 BP
 - Resolution : 1920 x 1080
 - Audio
 - Codec : H.264 BP
 - Caution
 - F4V file format is not supported
 - Screen Video is not supported

Power Point

- Compatible document file formats
 - Extension : ppt, pptx
 - Version : Office 97 ~ Office 2007
- Functions not supported
 - Animation effect
 - 3D shapes (which will be displayed in 2D)
 - Header and footer (some subitems are not supported)
 - Word Art
 - Align (A group alignment error may occur)
 - Office 2007 (SmartArt is not fully supported. 97 out of 115 subitems are supported.)
 - Object insertion
 - Opening encrypted documents
 - Vertical text (some subitems are not supported)
 - Slide notes and handout